



1333 M STREET

SE Waterfront, Washington DC

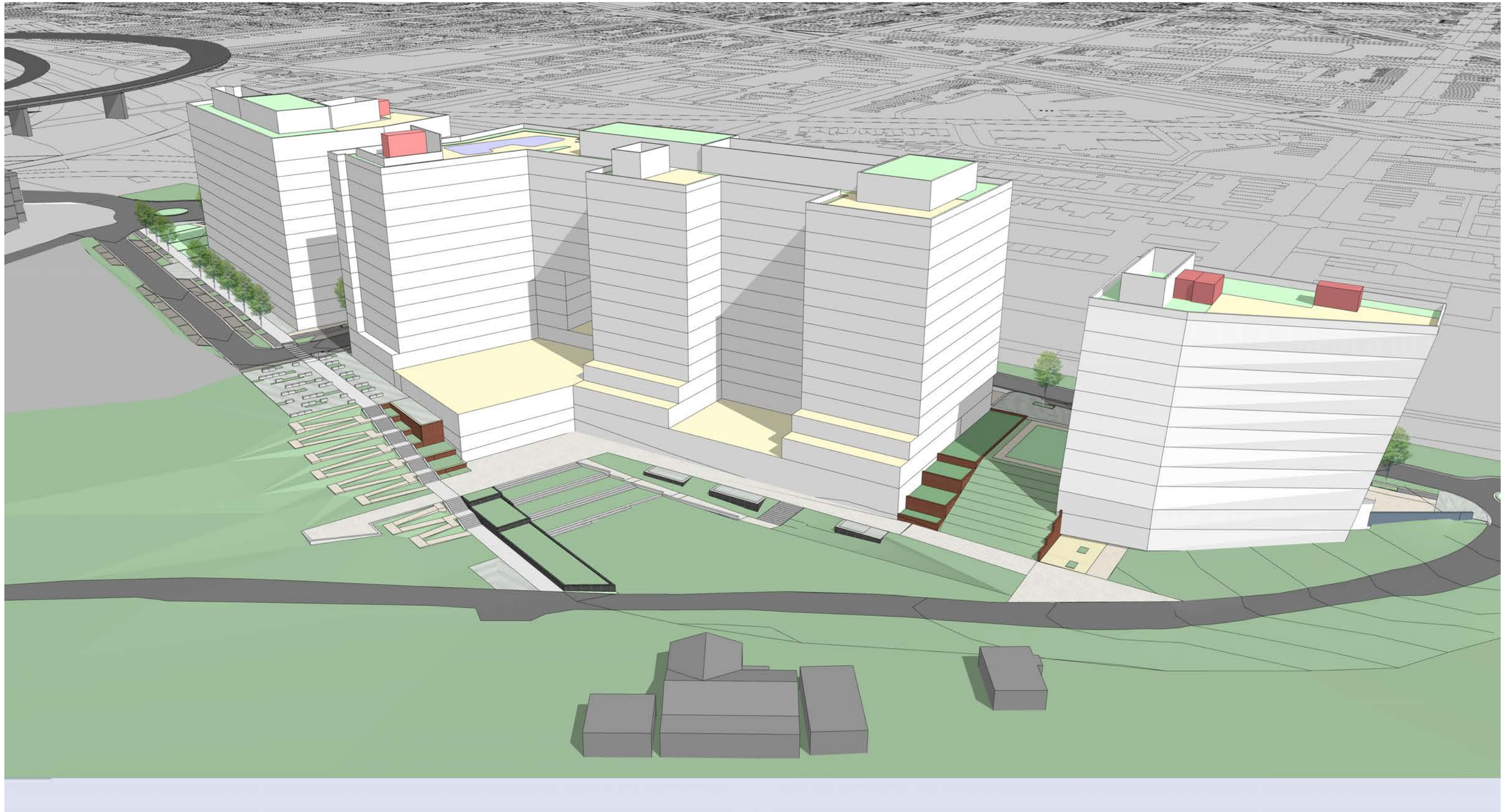
PUD SUBMISSION

AERIAL PERSPECTIVE



March 13, 2020

A-21



1333 M STREET

SE Waterfront, Washington DC

PUD SUBMISSION
AERIAL PERSPECTIVE: WATER



March 13, 2020

A-2 2



LEED v4 for BD+C: New Construction and Major Renovation

Project Checklist

Project Name: 1333 M Street

Date: 3/13/2020

Y ? N



Credit Integrative Process

1

| 17 | 3 | 1 | Location and Transportation | 32 |
|----|---|---|---|----|
| 4 | | | Credit LEED for Neighborhood Development Location | 16 |
| | | 1 | Credit Sensitive Land Protection | 1 |
| 2 | | | Credit High Priority Site | 2 |
| 5 | | | Credit Surrounding Density and Diverse Uses | 5 |
| 5 | | | Credit Access to Quality Transit | 5 |
| 1 | | | Credit Bicycle Facilities | 1 |
| | | | Credit Reduced Parking Footprint | 1 |
| | 3 | | Credit Green Vehicles | 1 |

| 8 | 2 | 1 | Sustainable Sites | 10 |
|---|---|---|--|----------|
| Y | | | Prereq Construction Activity Pollution Prevention | Required |
| 1 | | | Credit Site Assessment | 1 |
| 2 | | | Credit Site Development - Protect or Restore Habitat | 2 |
| 1 | | | Credit Open Space | 1 |
| 3 | | | Credit Rainwater Management | 3 |
| 1 | 1 | | Credit Heat Island Reduction | 2 |
| | 1 | 1 | Credit Light Pollution Reduction | 1 |

| 4 | 3 | 0 | Water Efficiency | 11 |
|---|---|---|--------------------------------------|----------|
| Y | | | Prereq Outdoor Water Use Reduction | Required |
| Y | | | Prereq Indoor Water Use Reduction | Required |
| Y | | | Prereq Building-Level Water Metering | Required |
| | 2 | | Credit Outdoor Water Use Reduction | 2 |
| 2 | | | Credit Indoor Water Use Reduction | 6 |
| 1 | 1 | | Credit Cooling Tower Water Use | 2 |
| 1 | | | Credit Water Metering | 1 |

| 9 | 11 | 0 | Energy and Atmosphere | 33 |
|---|----|---|---|----------|
| Y | | | Prereq Fundamental Commissioning and Verification | Required |
| Y | | | Prereq Minimum Energy Performance | Required |
| Y | | | Prereq Building-Level Energy Metering | Required |
| Y | | | Prereq Fundamental Refrigerant Management | Required |
| 3 | 4 | | Credit Enhanced Commissioning | 6 |
| 5 | 2 | | Credit Optimize Energy Performance | 18 |
| 1 | | | Credit Advanced Energy Metering | 1 |
| | 1 | | Credit Demand Response | 2 |
| | 2 | | Credit Renewable Energy Production | 3 |
| | 1 | | Credit Enhanced Refrigerant Management | 1 |
| | 1 | | Credit Green Power and Carbon Offsets | 2 |

| 2 | 2 | 0 | Materials and Resources | 13 |
|---|---|---|--|----------|
| Y | | | Prereq Storage and Collection of Recyclables | Required |
| Y | | | Prereq Construction and Demolition Waste Management Planning | Required |
| 1 | | | Credit Building Life-Cycle Impact Reduction | 5 |
| | 1 | | Credit Building Product Disclosure and Optimization - Environmental Product Declarations | 2 |
| | | | Credit Building Product Disclosure and Optimization - Sourcing of Raw Materials | 2 |
| | | | Credit Building Product Disclosure and Optimization - Material Ingredients | 2 |
| 1 | 1 | | Credit Construction and Demolition Waste Management | 2 |

| 8 | 4 | 0 | Indoor Environmental Quality | 16 |
|---|---|---|--|----------|
| Y | | | Prereq Minimum Indoor Air Quality Performance | Required |
| Y | | | Prereq Environmental Tobacco Smoke Control | Required |
| 1 | | | Credit Enhanced Indoor Air Quality Strategies | 2 |
| 1 | | | Credit Low-Emitting Materials | 3 |
| 1 | | | Credit Construction Indoor Air Quality Management Plan | 1 |
| 1 | 1 | | Credit Indoor Air Quality Assessment | 2 |
| 1 | | | Credit Thermal Comfort | 1 |
| 1 | 1 | | Credit Interior Lighting | 2 |
| 1 | 1 | | Credit Daylight | 3 |
| 1 | | | Credit Quality Views | 1 |
| | 1 | | Credit Acoustic Performance | 1 |

| 3 | 0 | 0 | Innovation | 6 |
|---|---|---|-------------------------------------|---|
| 2 | | | Credit Innovation | 5 |
| 1 | | | Credit LEED Accredited Professional | 1 |

| 0 | 0 | 0 | Regional Priority | 4 |
|---|---|---|---|---|
| | | | Credit Regional Priority: Specific Credit | 1 |
| | | | Credit Regional Priority: Specific Credit | 1 |
| | | | Credit Regional Priority: Specific Credit | 1 |
| | | | Credit Regional Priority: Specific Credit | 1 |

| | | | | |
|---|----|---|---------------|----------------------|
| 51 | 25 | 2 | TOTALS | Possible Points: 126 |
| Certified: 40 to 49 points, Silver: 50 to 59 points, Gold: 60 to 79 points, Platinum: 80 to 110 | | | | |